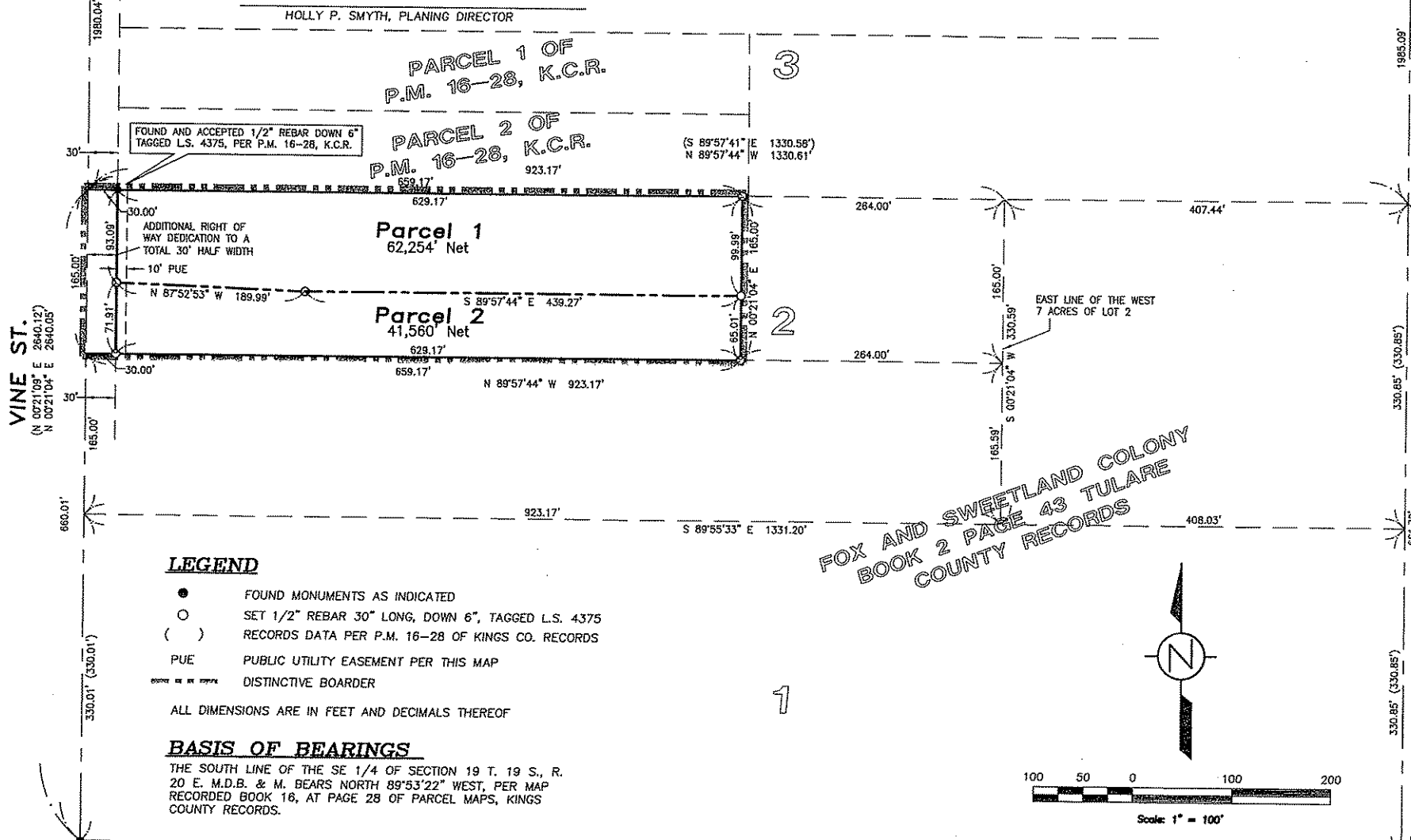


APPROVED BY THE LEMOORE PLANNING COMMISSION IN ACCORDANCE WITH REQUIREMENTS OF LAW IN A DULY AUTHORIZED MEETING HELD ON \_\_\_\_\_

THIS IS TO CERTIFY THAT THE PROVISIONS OF ARTICLE 8 OF CHAPTER 4 OF DIVISION 2 OF THE GOVERNMENT CODE HAVE BEEN COMPLIED WITH REGARDING DEPOSITS.

DATED THIS \_\_\_\_\_ DAY OF \_\_\_\_\_, 200\_\_\_\_\_

BY: Syrette Bowas, Deputy Aug. 24, 2007  
DOIL T. O'STEEN, TAX COLLECTOR/TREASURER DATE



S 1/4 CORNER OF SEC 10-19/20  
FOUND 2" BRASS CAP FLUSH IN  
CONCRETE, STAMPED KINGS COUNTY  
SURVEYOR, PER K.C.C.R. #3224

N 89°53'22" W 1331.79'  
(N 89°53'22" W 1331.75')  
BASIS OF BEARINGS

SE CORNER OF LOT 1 OF FOX & SWEETLAND  
FOUND 2" BRASS CAP, FLUSH IN CONCRETE  
KINGS COUNTY SURVEYOR, PER P.M. 16-2

**RECORDER'S STATEMENT**

DOCUMENT NO. \_\_\_\_\_ FEE PAID \_\_\_\_\_ FILED THIS \_\_\_\_\_ DAY OF \_\_\_\_\_  
200\_\_\_\_\_, AT \_\_\_\_\_ M., IN BOOK \_\_\_\_\_ OF PARCEL MAPS, AT PAGE \_\_\_\_\_,  
KINGS COUNTY RECORDS AT THE REQUEST OF ZUMWALT-HANSEN & ASSOCIATES, INC..

KEN BAIRD, COUNTY RECORDER

SAJ 07860