

# Registration Deadline May 2, 2008

Please send registration form to:

Kings County Behavioral Health  
Checks payable to KCAO  
450 Kings County Drive, Suite 104  
Hanford, CA 93230  
Fax: 559-589-6916

For questions regarding registration please contact  
Shea Gowin at Kings County Behavioral Health, (559)  
582-3211 ext. 2376 or [sgowin@co.kings.ca.us](mailto:sgowin@co.kings.ca.us) and for  
all other questions please contact Jeff Garner at KCAO,  
(559) 582-4386 ext. 178 or [jgarner@kcao.org](mailto:jgarner@kcao.org).

The registration fee of \$35.00 includes conference  
workbook, continental breakfast, lunch, and afternoon  
snack. Pre-registration is required. Space is limited so  
register early. Registration will be taken in the order  
received. There is no onsite registration.

Name \_\_\_\_\_  
Title \_\_\_\_\_  
Agency \_\_\_\_\_  
Address \_\_\_\_\_  
City/Zip \_\_\_\_\_  
Email \_\_\_\_\_  
Phone \_\_\_\_\_  
Fax \_\_\_\_\_

I would like to order a Bridges Out of Poverty  
book for an additional \$15.00

NON PROFIT ORG  
U.S. POSTAGE  
PAID  
PERMIT NO. 31  
HANFORD, CA 93230

Kings Community Action Organization  
1222 W. Lacey Boulevard  
Hanford, CA 93230

Jeff Brittz  
City of Lemoore  
119 Fox Street  
Lemoore, CA 93245

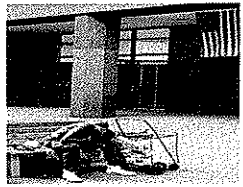
# Bridges Out of Poverty

Featuring  
Terie Dreussi Smith  
Coauthor of Bridges  
Out of Poverty

Conference Hosted by



Friday, May 30, 2008  
8:30am — 4:00pm  
Registration 7:30am — 8:15am  
Hanford Civic Auditorium



# Presenter's Information

Terie Dreussi Smith, a nationally recognized trainer, will present an all day training on **Bridges Out of Poverty: Strategies for Professionals and Communities**. Trained by Ruby Payne, author of *A Framework for Understanding Poverty*, the workshop is designed to "create a mental model of poverty, review poverty research, examine a theory of change and analyze poverty through the hidden rules of class, resources, family structure and language."

The conference puts into words what many veteran professionals and community members have experienced. Throughout the workshop, participants will receive specific strategies for improving outcomes for people living in poverty, but the focus of the conference is to provide a broad overview of the concepts.

Terie coauthored *Bridges Out of Poverty: Strategies for Professionals and Communities* with Ruby Payne and Philip DeVol. She is a former public school teacher with years of experience. Terie served as adjunct faculty for several colleges focused on empowering adult students transitioning out of poverty. Terie has been an author/consultant with aha! Process, Inc. since 1997.

Terie, of Greenville, South Carolina has served as Supervisor of Prevention Services at a community alcohol/other drug treatment and prevention organization for over nine years, and was instrumental in the organization's redesign of programs and services for prevention and early intervention clients from generational poverty.

# Sponsors

## PLATINUM SPONSOR

### Kings County Behavioral Health

## GOLD SPONSORS

### First 5 of Kings County

### Waste Management

## SILVER SPONSOR

### Self-Help Enterprises

## PARTNER SPONSORS

### California Department of Insurance

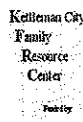
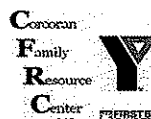
### Proteus Inc.

### West Hills Community College



## Presented as a collaboration effort by:

Armona FRC, Corcoran FRC, Hanford Elementary FRC, Kettleman City FRC, KCAO, Kings County Behavioral Health & Lemoore FRC



# Poverty in Kings County

28% of Kings County residents have less than a high school degree (20% State of California)

Kings County unemployment rate 8.5% (4.9% State of California)

21.3% of Kings County residents live in poverty (13.3% State of California)

27.3% of Kings County children live in poverty (18.6% State of California)

45.5% of Kings County adults with incomes below the poverty line who work

38.6% of Kings County residents experienced food insecurity in 2005 (Highest in California)

12% of Kings County residents under the age of 65 who do not have health coverage

## References:

CA Department of Education, UCLA Health Policy Research and Insured the Uninsured Project, United States Census Bureau and United States Department Labor

# Objectives

- Better understand the culture of poverty
- Understand the hidden rules among classes
- Understand how economic realities affect patterns of living
- Understand how mental models are effective
- Interventions for language and cognitive barriers
- Be able to identify practices for improving outcomes with individuals from generational poverty
- Continue/establish ongoing collaboration between service providers