

Current Zoning R-1-7 with Planned Unit Development overlay
Proposed Zoning RM-3 with Planned Unit Development overlay

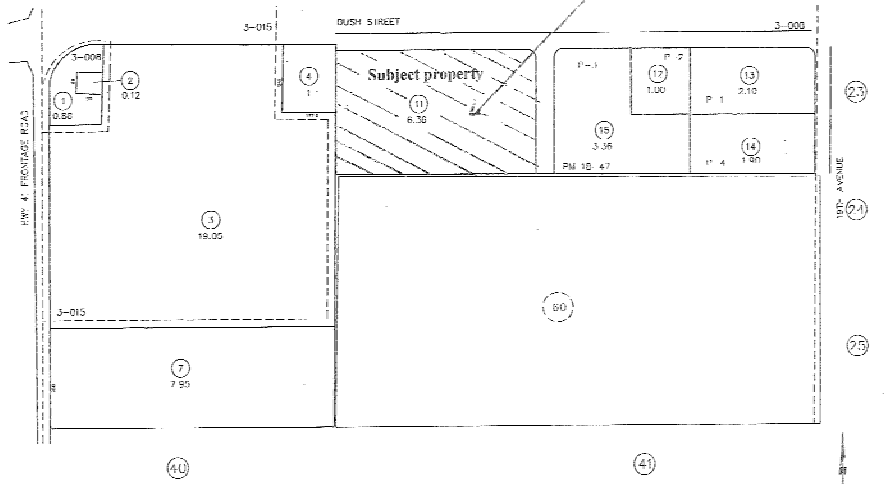
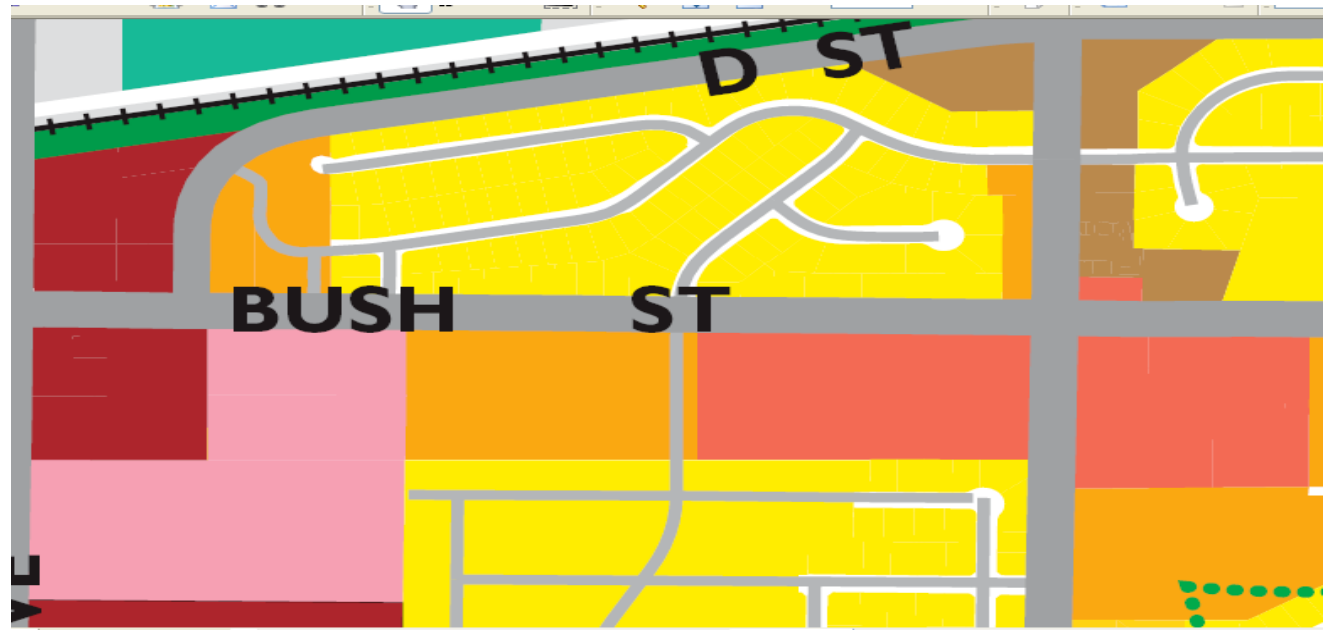


EXHIBIT A

ZONE CHANGE 2009-01

Copyright © 2007, King County Assessor's Office
All rights reserved.

2030 General Plan Land Use Designations



Village at Acacia Drive

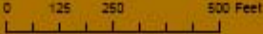
Legend

- Sewer Lift Stations
- Power Pole Lights
- Power_St_Lght
- Fire Hydrants
- Sewer Lines
- Water Lines



City of Lemoore

Scale 1:13,000



Map data © 2013 Google, Imagery © 2013 Google, Labels © 2013 Google, Streets © 2013 Google, Terrain © 2013 Google, Imagery © 2013 Google, Labels © 2013 Google, Streets © 2013 Google, Terrain © 2013 Google

Map data © 2013 Google, Imagery © 2013 Google, Labels © 2013 Google, Streets © 2013 Google, Terrain © 2013 Google



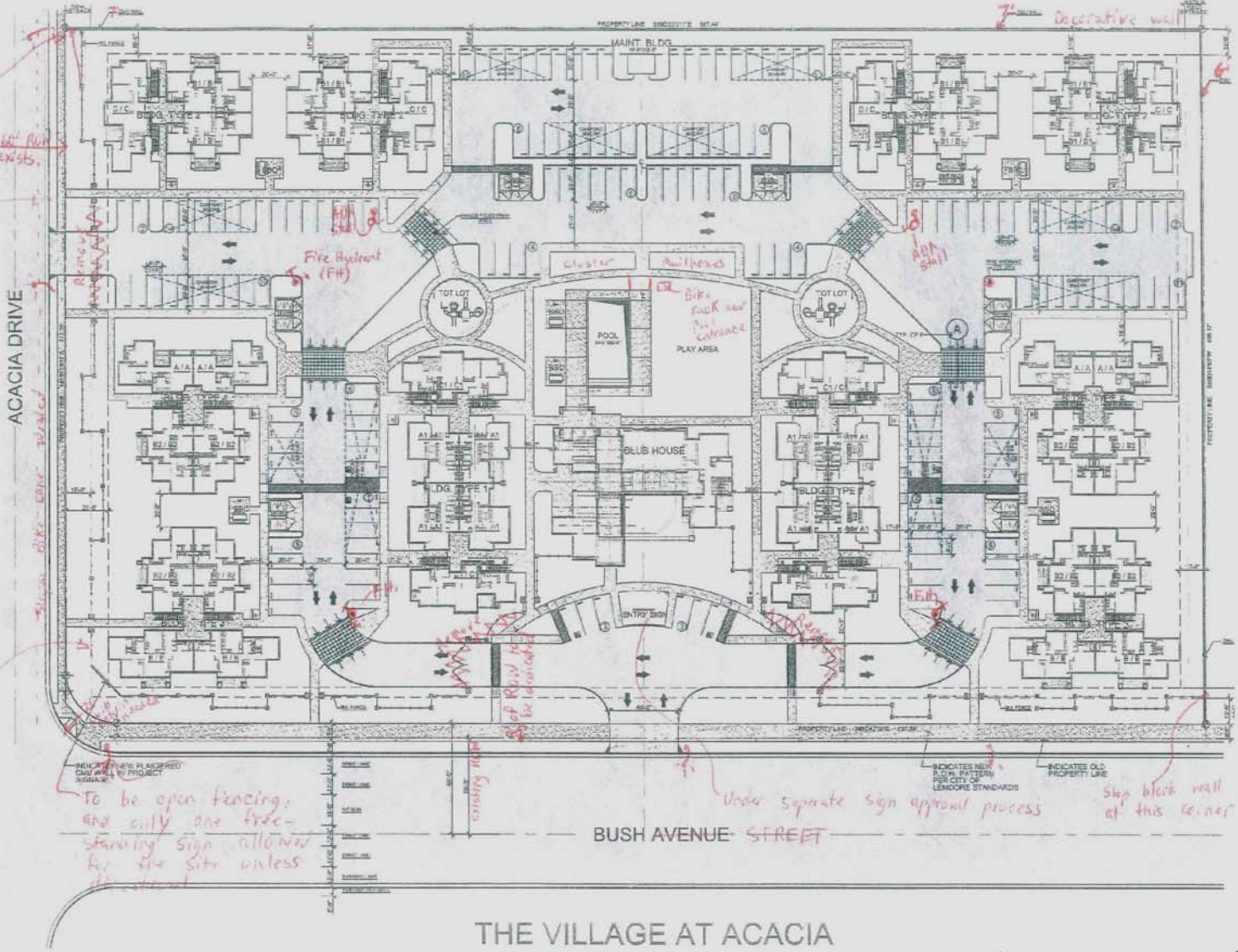
Redlined Site Plan

• Sending corner to 3' in back of sidewalk Nord

• 10' PVE to be dedicated behind ROW along Acacia Dr. and Bush St.

• Enclosed fire department connections to be integrated into a log. design on the northerly sides of buildings close to parking lots.

• Weight from fence to be 3 1/2' per City zoning Ordinance



To be open fencing, and only one free-standing sign allowed for the site unless otherwise stated

Under separate sign approval process

Strip blank wall at this corner

THE VILLAGE AT ACACIA

ACACIA DRIVE



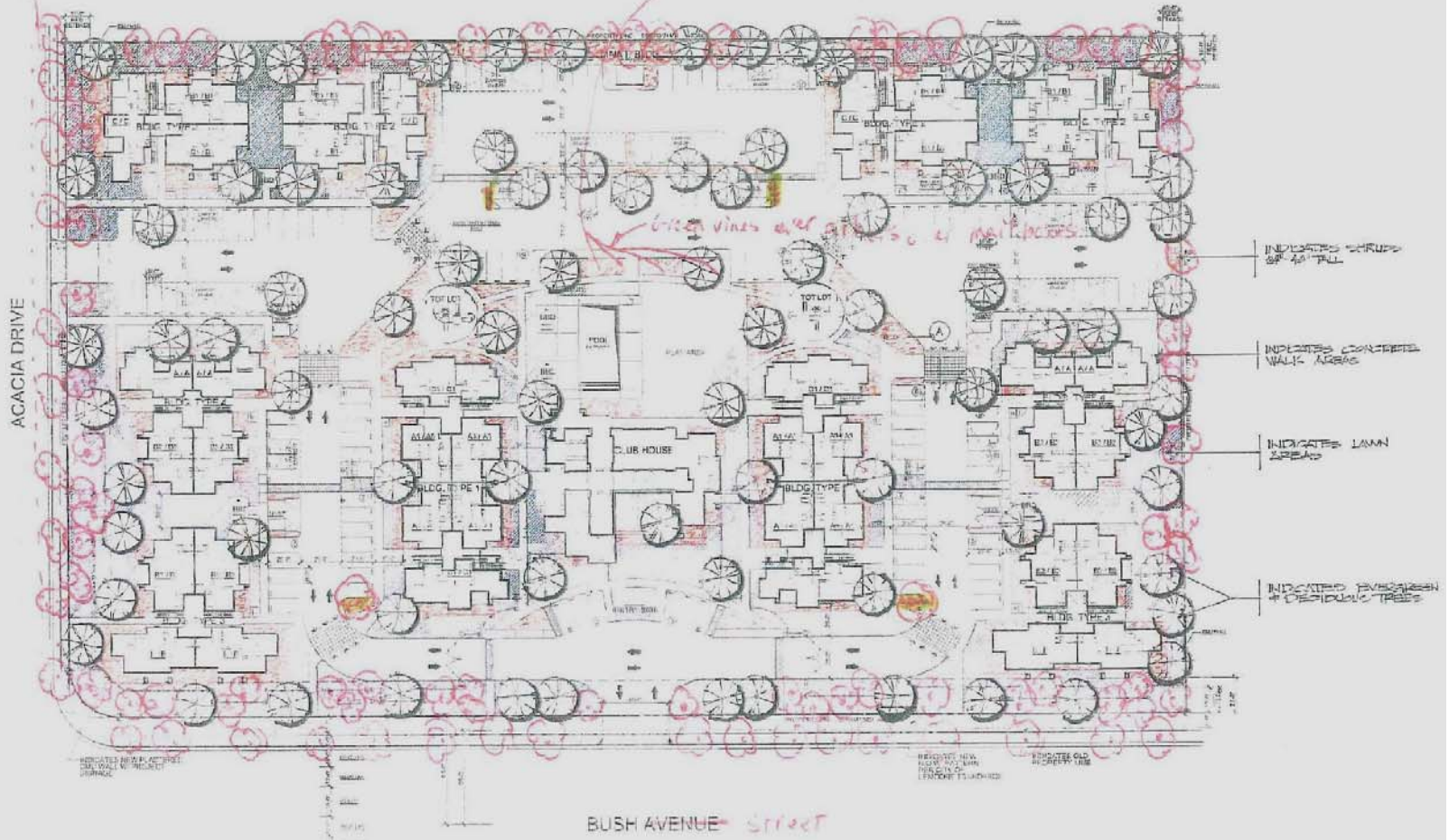
BUSH AVENUE

Scale 1:5000 (approximate) 20/03/2024

Refined Landscape Plan

slip
bike lane

• Add 2 benches to each lot area under trees.
Add 4 benches under arbor/mail box area to parents to watch children and socialize



THE VILLAGE AT ACACIA

