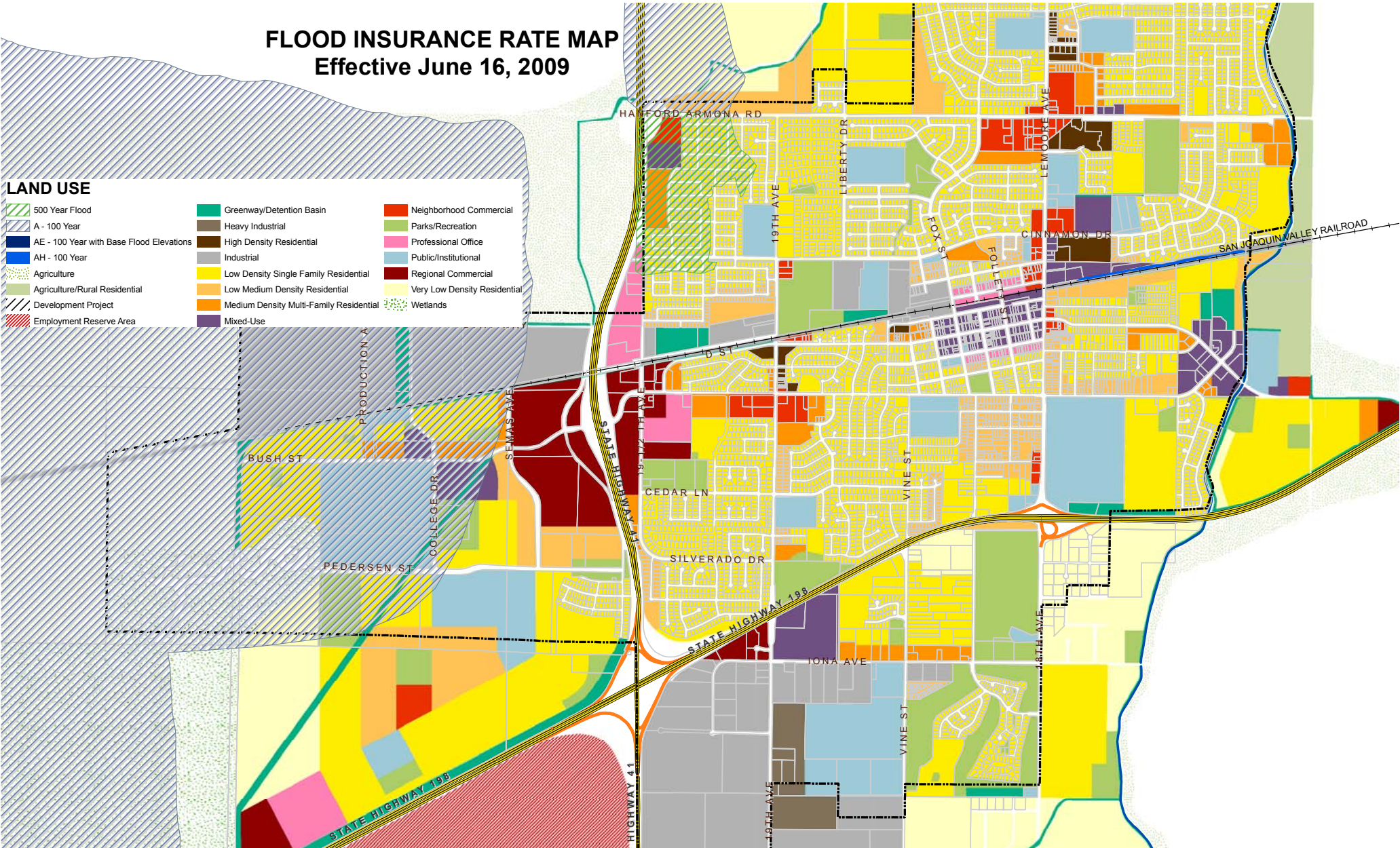


FLOOD INSURANCE RATE MAP

Effective June 16, 2009

LAND USE

- | | | | | | |
|--|--|--|---|--|------------------------------|
| | 500 Year Flood | | Greenway/Detention Basin | | Neighborhood Commercial |
| | A - 100 Year | | Heavy Industrial | | Parks/Recreation |
| | AE - 100 Year with Base Flood Elevations | | High Density Residential | | Professional Office |
| | AH - 100 Year | | Industrial | | Public/Institutional |
| | Agriculture | | Low Density Single Family Residential | | Regional Commercial |
| | Agriculture/Rural Residential | | Low Medium Density Residential | | Very Low Density Residential |
| | Development Project | | Medium Density Multi-Family Residential | | Wetlands |
| | Employment Reserve Area | | Mixed-Use | | |



DISCLAIMER: Parcel information is received from the County of Kings Assessors Office and may not contain accurate land measures. Interested parties should consult an Engineer or Geomatics Professional for accurate land measure information.

SCALE 1:20,000

City of Lemoore

2,000 1,000 0 2,000 Feet

Created by: J.G. Mendiola Date: 04/30/09