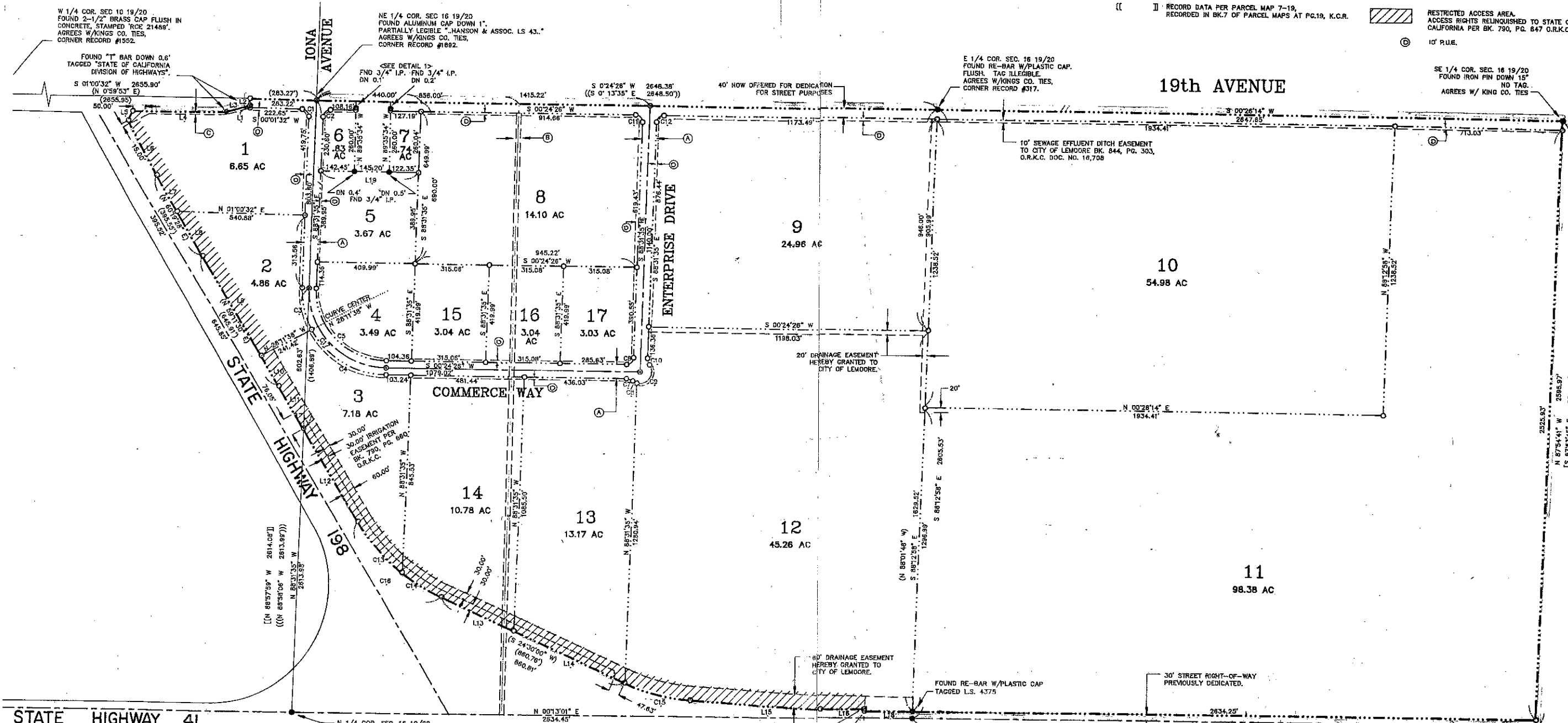


COUNTY TRACT NO. 614  
**LEMOORE INDUSTRIAL PARK NO. 1**  
 CITY OF LEMOORE COUNTY OF KINGS STATE OF CALIFORNIA



- LEGEND**
- [ ] RECORD DATA PER CALIFORNIA DIVISION OF HIGHWAYS MAPS FOR DISTRICT 6, KINGS COUNTY, ROUTE 41, SHEET 4, POST MILE 37.89.
  - ( ) RECORD DATA PER CALIFORNIA DIVISION OF HIGHWAYS MAPS FOR DISTRICT 6, KINGS COUNTY, ROUTE 198, SHEETS 1-4 OF 23.
  - (( )) RECORD DATA PER PARCEL MAP 7-34, RECORDED IN BK.7 OF PARCEL MAPS AT PG.34, K.C.R.
  - (((( ))) RECORD DATA PER PARCEL MAP 8-80, RECORDED IN BK.8 OF PARCEL MAPS AT PG.80, K.C.R.
  - (((( ))) RECORD DATA PER PARCEL MAP 7-65, RECORDED IN BK.7 OF PARCEL MAPS AT PG.65, K.C.R.
  - (((( ))) RECORD DATA PER PARCEL MAP 7-19, RECORDED IN BK.7 OF PARCEL MAPS AT PG.19, K.C.R.
  - MONUMENTS FOUND AND ACCEPTED AS NOTED.
  - SET 3/4" X 30" IRON PIPE DOWN 5'. SET TAG R.C.E. 27799
  - ⊙ SET 2" BRASS CAP FLUSH IN CONCRETE. SET TAG R.C.E. 2
  - Ⓐ 60' NOW OFFERED FOR DEDICATION FOR STREET PURPOSES.
  - Ⓑ 20' SEWER EASEMENT TO CITY OF LEMOORE PER BK. 702, PG. 398, O.R.K.C.
  - Ⓒ 10' WATER MAIN EASEMENT TO CITY OF LEMOORE PER BK. 1380, PG. 63, O.R.K.C. DOC. NO. 11933.
  - ▨ RESTRICTED ACCESS AREA. ACCESS RIGHTS RELINQUISHED TO STATE OF CALIFORNIA PER BK. 790, PG. 847 O.R.K.C.
  - Ⓒ 10' R.U.E.



LOT	CURVE	RADIUS	LENGTH	TANGENT	CHORD	DELTA
1	C1	30.00'	47.37'	30.24'	42.80'	90°27'53"
6	C2	30.00'	48.57'	29.45'	42.03'	88°56'01"
2	C3	300.00'	198.41'	95.34'	184.33'	29°40'03"
4	C4	300.00'	385.78'	213.75'	387.38'	61°23'58"
3	C5	300.00'	478.82'	305.64'	424.18'	91°03'59"
17	C6	30.00'	48.57'	29.45'	42.03'	88°56'01"
13	C7	45.00'	29.74'	15.43'	29.20'	37°51'49"
13	C8	50.00'	19.64'	9.95'	19.51'	22°30'17"
12	C9	45.00'	124.05'	145.98'	94.60'	142°02'22"
9	C10	45.00'	29.74'	15.43'	29.20'	37°51'49"
8	C11	30.00'	47.68'	30.56'	42.03'	88°56'01"
9	C12	30.00'	48.57'	29.45'	42.03'	88°56'01"
3	C13	802.00'	268.01'	145.57'	268.47'	20°34'33"
14	C14	802.00'	197.62'	89.31'	197.12'	14°07'06"
12	C15	802.00'	290.38'	146.79'	288.78'	20°44'36"
3,14	C16	802.00'	290.33'	146.79'	288.78'	20°44'36"
3,14	C17	802.00'	485.63'	260.52'	478.25'	34°41'39"
3,14	C18	802.00'	487.44'	260.52'	478.25'	34°41'39"
3,14	C19	336.00'	524.50'	336.20'	471.01'	81°03'59"

LINE	DIRECTION	DISTANCE	RECORDED DATA	
			DIRECTION	DISTANCE
L1	N 89°59'28" W	19.00'		
L2	S 89°59'28" E	19.00'	(S 89°00'07" E)	(30.00')
L3	S 15°41'35" E	104.38'	(S 15°42'08" E)	(104.40')
L4	N 00°27'52" W	390.07'	(N 00°28'14" W)	(390.13')
L5	S 84°47'37" E	43.90'	(S 84°47'51" E)	(43.91')
L6	S 82°03'20" W	280.97'	(S 82°03'15" W)	(281.00')
L7	N 80°19'25" E	176.24'		
L8	N 80°18'25" E	219.29'		
L9	S 89°11'19" W	495.85'		
L10	N 89°11'19" E	150.00'		
L11	N 89°12'27" E	210.67'	(N 89°12'47" E)	(210.89')
L12	N 89°12'27" E	461.11'	(N 89°12'47" E)	(460.95')
L13	N 24°30'39" E	337.74'		
L14	N 24°30'39" E	523.07'		
L15	S 03°46'01" W	555.21'	(S 03°45'30" W)	(555.13')
L16	N 00°37'08" W	187.61'	(N 00°37'32" W)	(187.58')
L17	S 89°28'36" W	9.00'	(S 89°28'28" W)	(9.00')
L18	S 00°13'01" W	207.06'	(S 00°12'55" W)	(206.21')
L19	S 00°24'26" W	409.99'		
L20	S 89°46'59" E	30.00'		

**BASIS OF BEARINGS**  
 THE BASIS OF BEARINGS IS THE WEST LINE OF THE SOUTHEAST QUARTER OF SECTION 16, T 19S, R 20E, MOUNT DIABLO BASE AND MERIDIAN, TAKEN TO BE N 01°13'17" E PER STATE OF CALIFORNIA, DIVISION OF HIGHWAYS, MAPS FOR DISTRICT 6, KINGS COUNTY, ROUTE 198, SHEET 2 OF 23.