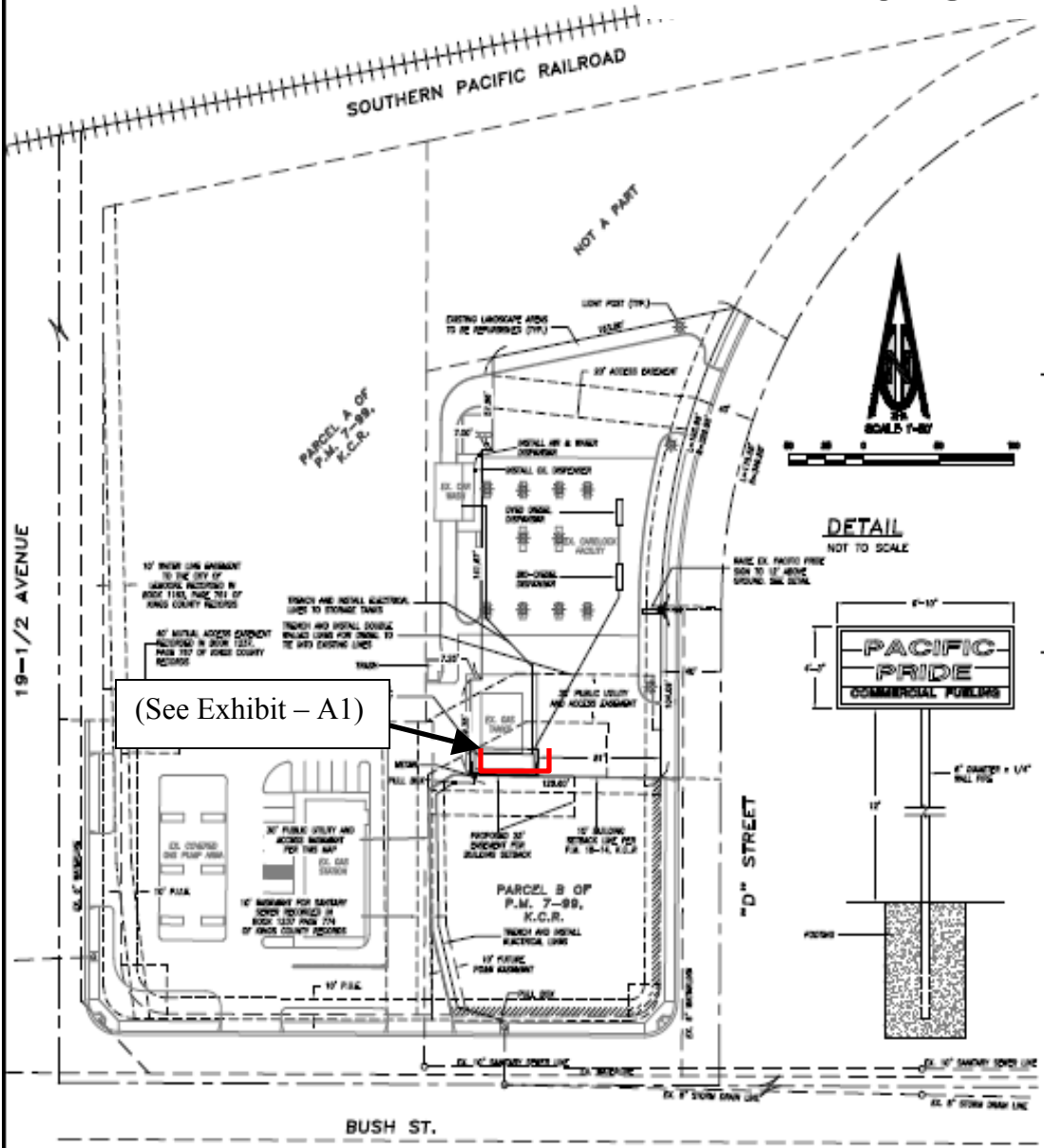


Exhibit – A



(See Exhibit – A1)

SITE PLAN

OWNER / APPLICANT

DASSEL'S PETROLEUM INC.
31 WRIGHT ROAD
HOLLISTER CA, 95023-9319

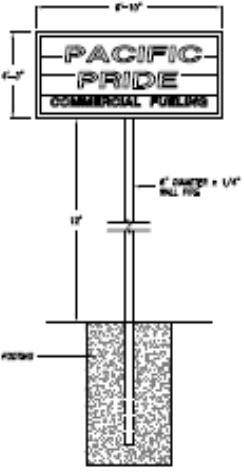
GENERAL INFORMATION

EXISTING ZONE	COMMERCIAL HIGHWAY
PROPOSED ZONE	COMMERCIAL HIGHWAY
EXISTING USE	OIL LOCK FACILITY
PROPOSED USE	OIL LOCK FACILITY
SEWER	CITY OF LEADORE
WATER	CITY OF LEADORE
A.P.N.	023-450-008



DETAIL

NOT TO SCALE



VICINITY MAP

SCALE



SITE PLAN for DASSEL'S PETROLEUM INC.

CIVIL ENGINEER
ZUMWALT HANSEN & LAND SERVICES
600 N. PINE STREET
HAWAII, CA 94503
(916) 884-1000

DATE: 02A
SCALE:
BY:
DATE: See Left Margin
JOB NO. 040713
SHEET 1