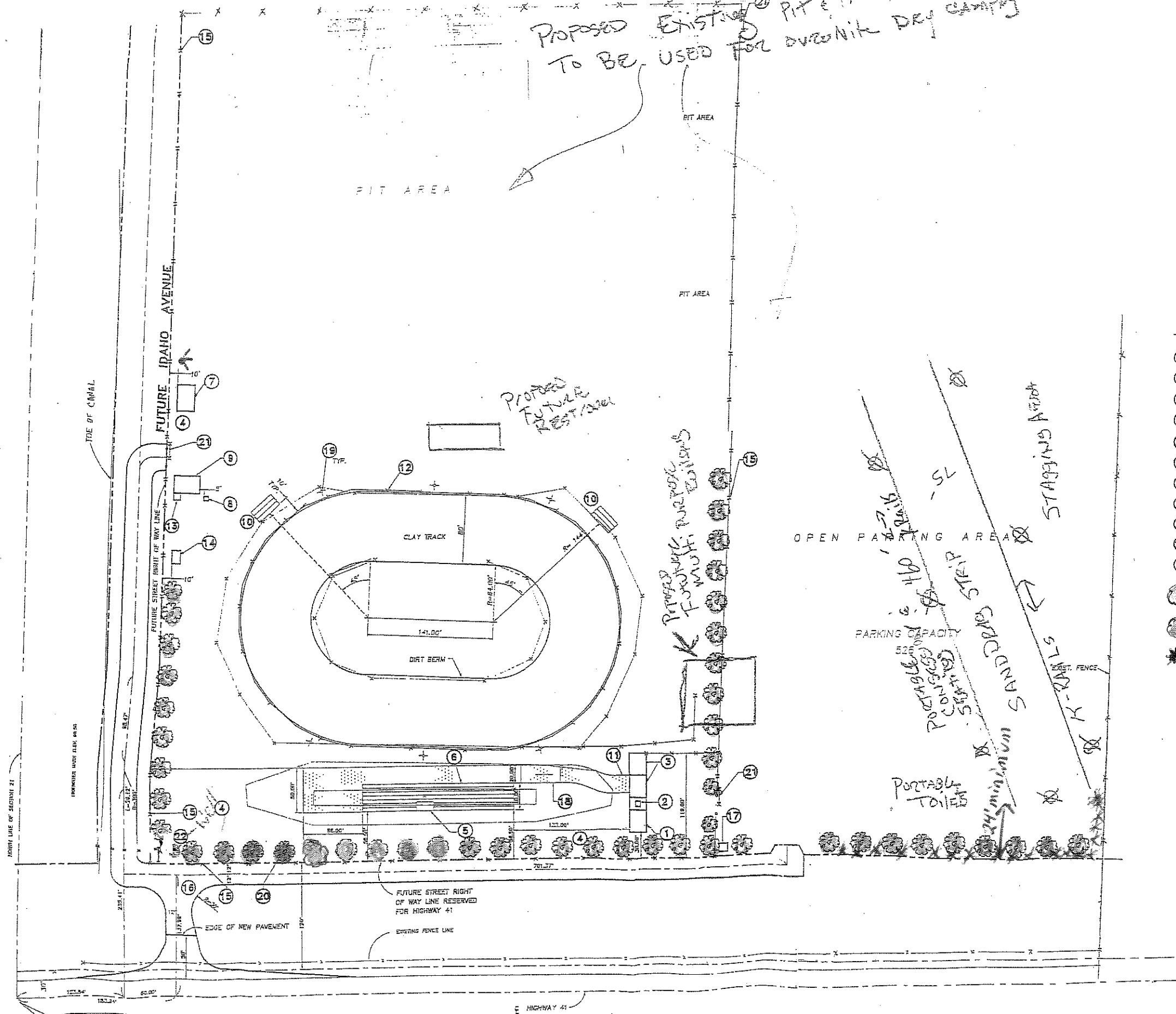


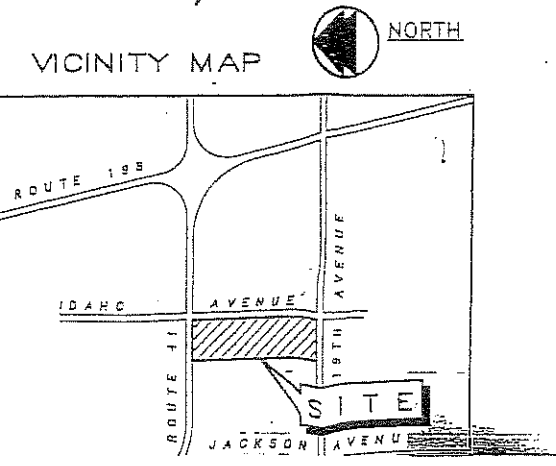
2009 Revised Redlined Site Plan

PORTABLE LITE PLANTS
FUTURE PROPOSED LIGHT POLES



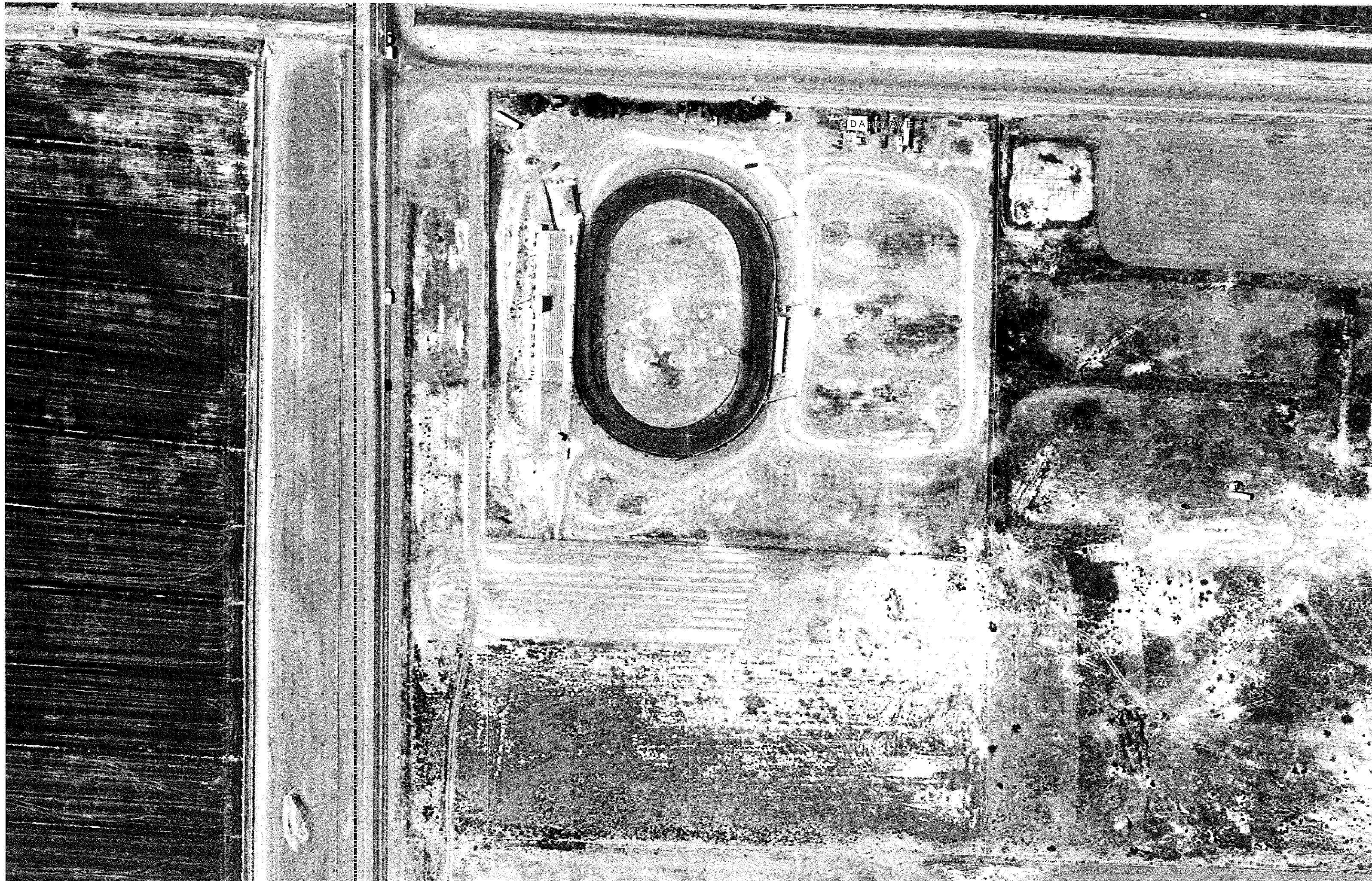
LEGEND

- | | | |
|---|--------------------|--|
| ① BEVERAGE BOOTH (20'x25') | TEMPORARY/PORTABLE | ⑫ 3' GUARDRAIL W/8' CHAIN LINK FENCE |
| ② TICKET BOOTH (6'x6') | | ⑬ MAIN ELEC. PANEL |
| ③ SNACK BARS (TEMPORARY/PORTABLE) (20'x25') | | ⑭ PIT BOARD (10'x15') |
| ④ RESTROOM AREA (PORTABLE) | | ⑮ 6' CHAIN LINK FENCE W/3 STRANDS BARBED WIRE |
| ⑤ TOWER (10'x20')(RELOCATED) | | ⑯ DECOMPOSED GRANITE SURFACE |
| ⑥ GRANDSTAND | | ⑰ CITY STD. TRASH ENCLOSURE |
| ⑦ STORAGE BLDG. (20'x30') | | ⑱ CONCRETE RAMP |
| ⑧ SCALES | | ⑲ LIGHT STANDARD (SEE ELECTRICAL PLAN FOR SPECIFICS INCLUDING HORIZONTAL LOCATION) |
| ⑨ SIGN-IN BOOTH (20'x30') | | ⑳ RUSSIAN OLIVE TREES |
| ⑩ STANDS | | ㉑ 20' SLIDING GATE |
| ⑪ CONCRETE WALK | | ㉒ RELOCATED LIGHTED SIGN 80 S.F. ± |
- Existing Trees
 ○ Missing Trees
 * New shrubbery



N 1/4 COR. SEC. 21-15, 20

E HIGHWAY 41

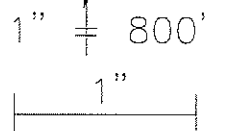


THIS MAP IS FOR ASSESSMENT PURPOSES ONLY
 IT IS NOT TO BE CONSTRUED AS PORTRAYING
 LEGAL OWNERSHIP OF DIVISIONS OF LAND FOR
 PURPOSES OF ZONING OR SUBDIVISION LAW.
 OCTOBER 2008

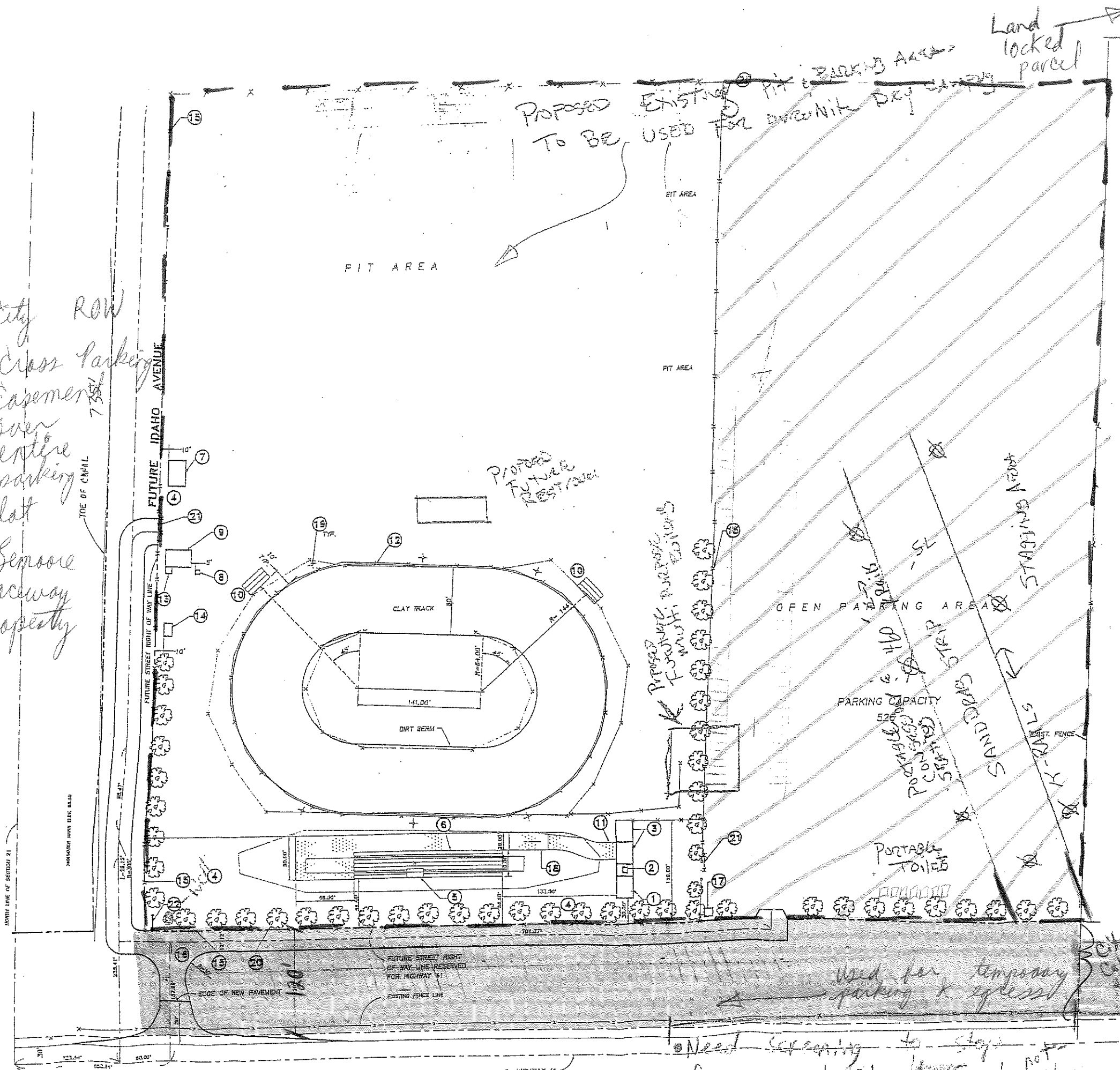
KINGS COUNTY ASSESSOR'S MAP

SEC'S. 21 & 22-19-20

24-08



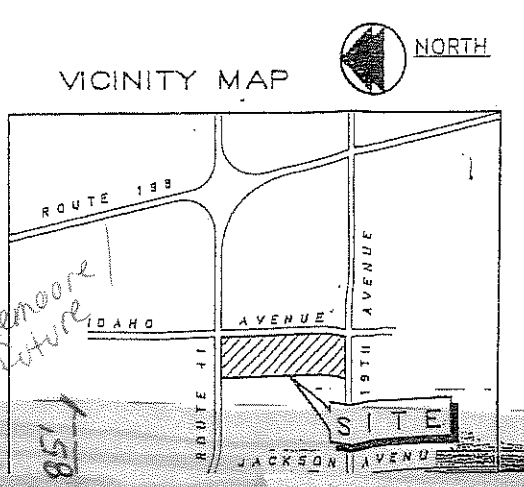
City ROW
 Cross Parking
 Easement
 over
 entire
 parking
 lot
 Lemoore
 raceway
 property



PORTABLE LIGHT PLANTS
 FUTURE PROPOSED LIGHT POLES
 Sand Racing Association (?N.R.A.)
 has standard bar, track, TT
 Jerry Watson @ Annual

Bleachers need backing on
 top 100'
 *Need to not have backing
 on Highway 41
 keep clear separation between
 'racing' area and fans.

- LEGEND**
- 1 - BEVERAGE BOOTH (20'x20') TEMPORARY/PORTABLE
 - 2 - TICKET BOOTH (6'x5')
 - 3 - SHACK BARS (TEMPORARY/PORTABLE) (20'x20')
 - 4 - RESTROOM AREA (PORTABLE)
 - 5 - TOWER (10'x20')(RELOCATED)
 - 6 - GRANDSTAND
 - 7 - STORAGE BLDG. (20'x30')
 - 8 - SCALES
 - 9 - SIGN-IN BOOTH (20'x30')
 - 10 - STANDS
 - 11 - CONCRETE WALK
 - 12 - J GUARDRAIL W/3' CHAIN LINK FENCE
 - 13 - MAIN ELEC. PANEL
 - 14 - PIT BOARD (10'x13')
 - 15 - 5' CHAIN LINK FENCE W/3 STRANDS BARBED WIRE
 - 16 - DECOMPOSED GRANITE SURFACE
 - 17 - CITY STD. TRASH ENCLOSURE
 - 18 - CONCRETE RAMP
 - 19 - LIGHT STANDARD (SEE ELECTRICAL PLAN FOR SPECIFICS INCLUDING HORIZONTAL LOCATION)
 - 20 - RUSSIAN OLIVE TREES
 - 21 - 20' SLIDING GATE
 - 22 - RELOCATED LIGHTED SIGN 80 S.F. ±



Used for temporary parking & egress
 Need screening to stop freeway bystanders, to not
 Calander's distance for land-tar: Screening in near term)