

**NOW  
AVAILABLE!**

# **SOLAR GRANT PROGRAM**

**\$5,000  
Grants**

In an effort to encourage homeowners to "Go Solar" and reduce their dependence on electricity, the Lemoore Redevelopment Agency is offering grants of \$1,000 per KW to install solar power systems. The maximum grant amount is \$5,000. Applicants must provide the additional funding needed to complete the installation. However, California Solar Initiative Incentives are currently available and there are also Federal Tax Credits Available. (Please refer to the State's website at [www.gosolarcalifornia.ca.gov](http://www.gosolarcalifornia.ca.gov) for more information on these incentives and a variety of additional information to help you decide if solar is right for you.)

Grants are available for income-qualified homeowners who reside within the Lemoore Redevelopment Project Area. Once your application has been approved you will be required to obtain three estimates for the solar installation. You will then select a contractor and sign an Agreement with the Redevelopment Agency and the contractor. Once the system has been installed and approved, grant payment will be issued to the contractor by the Agency. The grants will be issued on a first come, first served basis until the funding is exhausted.

The maximum annual income\* levels are as follows:

One person-\$48,050; Two persons-\$54,900; Three persons-\$61,800;

Four persons-\$68,650; Five persons-\$74,150; Six persons-\$79,650;

Seven persons-\$85,150; Eight persons-\$90,600.

\*Annual Income is defined in 24 CFR, Part 5.



**For Information and Applications  
Please Contact  
Brooke Austin, Housing Specialist  
Lemoore Redevelopment Agency  
119 Fox Street, Lemoore  
(559) 924-6702**

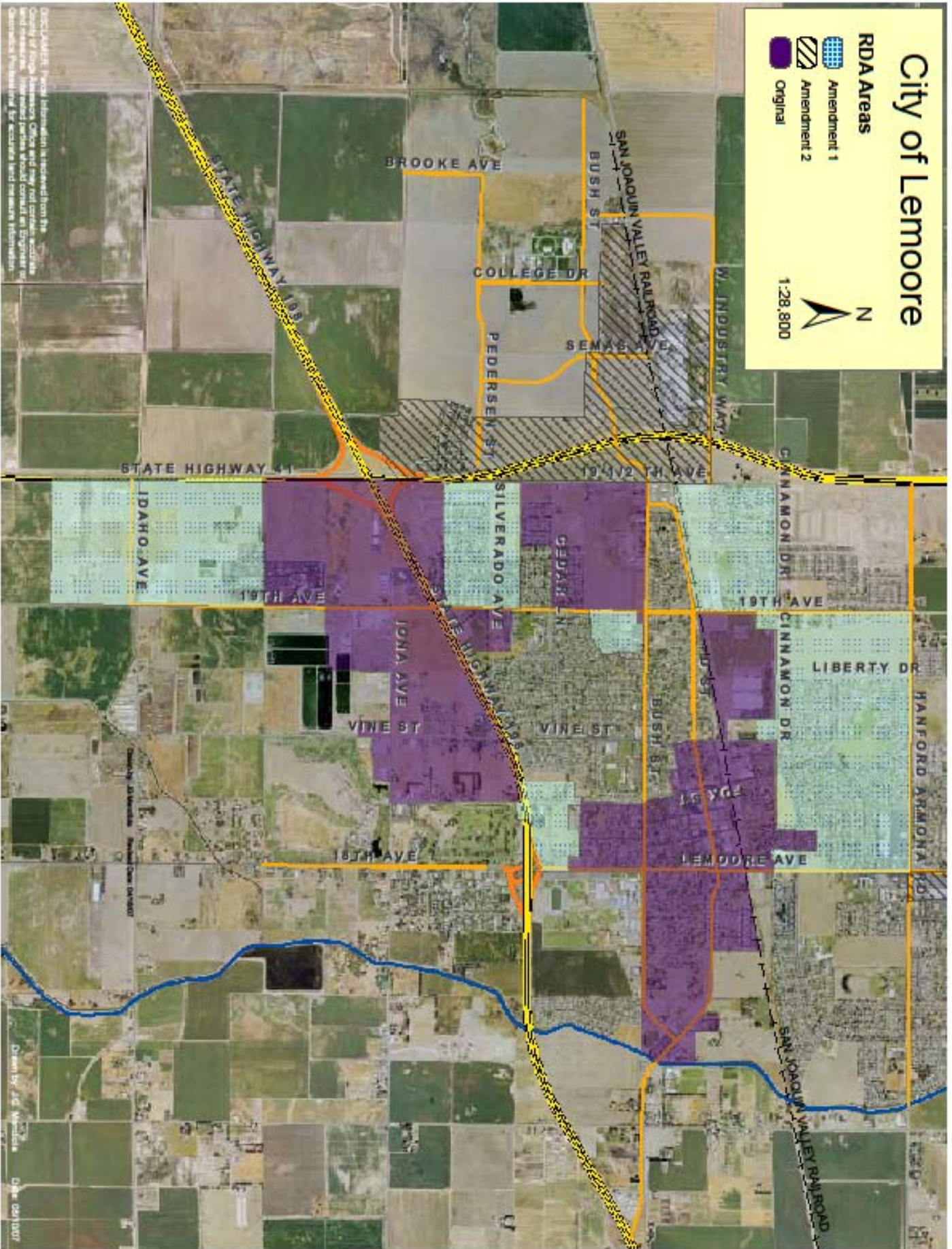
**GO SOLAR  
LEMOORE!**

# City of Lemoore

## RDA Areas

-  Amendment 1
-  Amendment 2
-  Original

1:28,800



DISCLAIMER: Parcel information is derived from the County of Kings Assessment Office and may not contain accurate and complete information. It is recommended that you consult with a professional land use planner for accurate land use information.

Drawn by J.C. Mendez Date 08/10/07